

Pool Management System

Track Your Pack

When tracking package flows is essential, Track Your Pack streamlines the process.

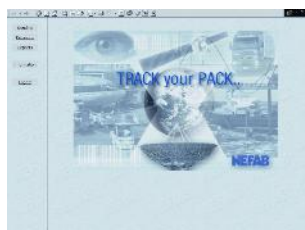
Nefab has developed this system in order to share information related to physical flows. Through simple web access it provides stock levels, movements and statistics, and permits the administration of various loops. It is suitable for all types of returnable packaging and related accessories.

Main Features

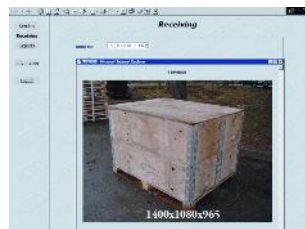
Track Your Pack has unique advantages to facilitate the pool administration:

- Full cycle time control
- Alert for time exceeded
- Secured access
- Maintenance management
- Full packaging database, packaging sets and components
- ABC costing module for administrator

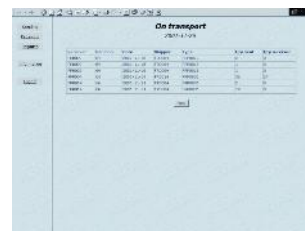
Track Your Pack is the most convenient tool for tracking your package flows.



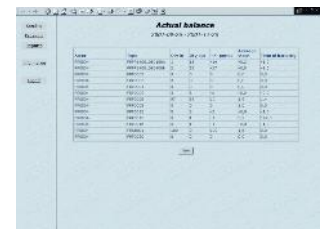
1. Direct access from the web, easy to handle.



2. Full packaging database, including loading volume, weight limits, etc.



3. Advance notice of deliveries.



4. Access to full reports, such as cycle time, damages, stock level and ABC costing.

Services

System Facilities

Track Your Pack will help you to manage all packaging flows connected to your activity. Inbound or outbound, parameters can be set according to the users' typology, products or references.

A number of reports are available to provide all the information relating to each sector in the loop. Even time limits can be set in advance, and a specific module has been developed for the pool administrator to monitor the pooling cost.

Track Your Pack can capture different data types, such as radio frequencies, barcode systems, direct manual data, SMS messages and software transfer.

Container type	Container code	Category	Part of container	LNWH	Volume m3	Volume collapsed m3
FPP001	7024 P set	Collapsible system	1 m3 FPP12001001504 1 m3 FPP12001001508 1 m3 FPP12001001512 1 m3 FPP12001001516	12001001504	0.31	0.107
FPP002	7024 P set	Collapsible system	2 m3 FPP12001001508 1 m3 FPP12001001512 1 m3 FPP12001001516	12001001508	0.606	0.211
FPP003	7024 P set	Collapsible system	1 m3 FPP12001001508 1 m3 FPP12001001512 1 m3 FPP12001001516	12001001508	0.618	0.220
FPP004	7024 P set	Collapsible system	2 m3 FPP12001001508 1 m3 FPP12001001512 1 m3 FPP12001001516	12001001508	1.191	0.420

1. Full database for packaging, components, sets, pictures, actors, cycle time limit

Actor	Type	Qty in	Qty out	Balance	Receiving	Sending	Cost	Income	Result
FPP014	FPP12001001504	10	0	0.0	0	3	1200	0	-1200
FPP014	FPP12001001508	20	0	0.0	0	3	1200	0	-1200
FPP014	FPP002	2	0	0.0	5	0	50	0	-50
FPP014	FPP003	5	0	0.0	5	0	80	0	-80
FPP014	FPP004	1	0	0.0	5	0	50	0	-50
FPP014	FPP005	0	0	0.0	6	1	647	0	-647
FPP014	FPP006	200	200	0	15	1000	0	-7000	
FPP014	FPP008	1	0	0.0	0	1	200	0	-200
FPP014	FPP010	0	0	0.0	0	1	400	0	-400
FPP014	FPP010	0	0	0.0	0	0	50	0	-50

2. Report on defined period for flow exchanges, stock levels, and transportation, showing the average stock level and the average handling time.

Actor	Type	Qty in	Qty out	- / + period	Average stock	Time of handling
FPP014	FPP12001001504	10	0	12	C.C	0.3
FPP014	FPP12001001508	20	0	32	C.C	0.3
FPP014	FPP002	2	0	0	C.C	0.0
FPP014	FPP003	5	0	0	C.C	0.0
FPP014	FPP004	1	0	1	C.C	0.0
FPP014	FPP005	0	0	0	C.C	0.0
FPP014	FPP006	200	200	22	C.C	0.0
FPP014	FPP008	1	0	0	C.C	0.0
FPP014	FPP010	0	0	0	C.C	0.0
FPP014	FPP010	0	0	0	C.C	0.0

3. Trace Report for looking for a specific package or reference. It shows the stock level in each actors plant concerned.

Actor	Type	Balance	Receiver	Shipper	Serial no.	Date
FPP004	FPP008	2	-	-	-	-
FPP014	FPP005	21	-	-	-	-
FPP007	FPP006	-40	-	-	-	-
-	FPP001	8	FPP004	FPP014	13	2001-11-19
-	FPP006	15	FPP014	FPP014	56	2001-11-21

4. Very useful cost report per cycle/per actor. Can also include maintenance and cleaning costs.